

£225,000

15 Carisbrooke Court, North Square, Knowle, PO17 5FX

DRAFT DETAILS : We are awaiting verification from the Vendor that these details are correct



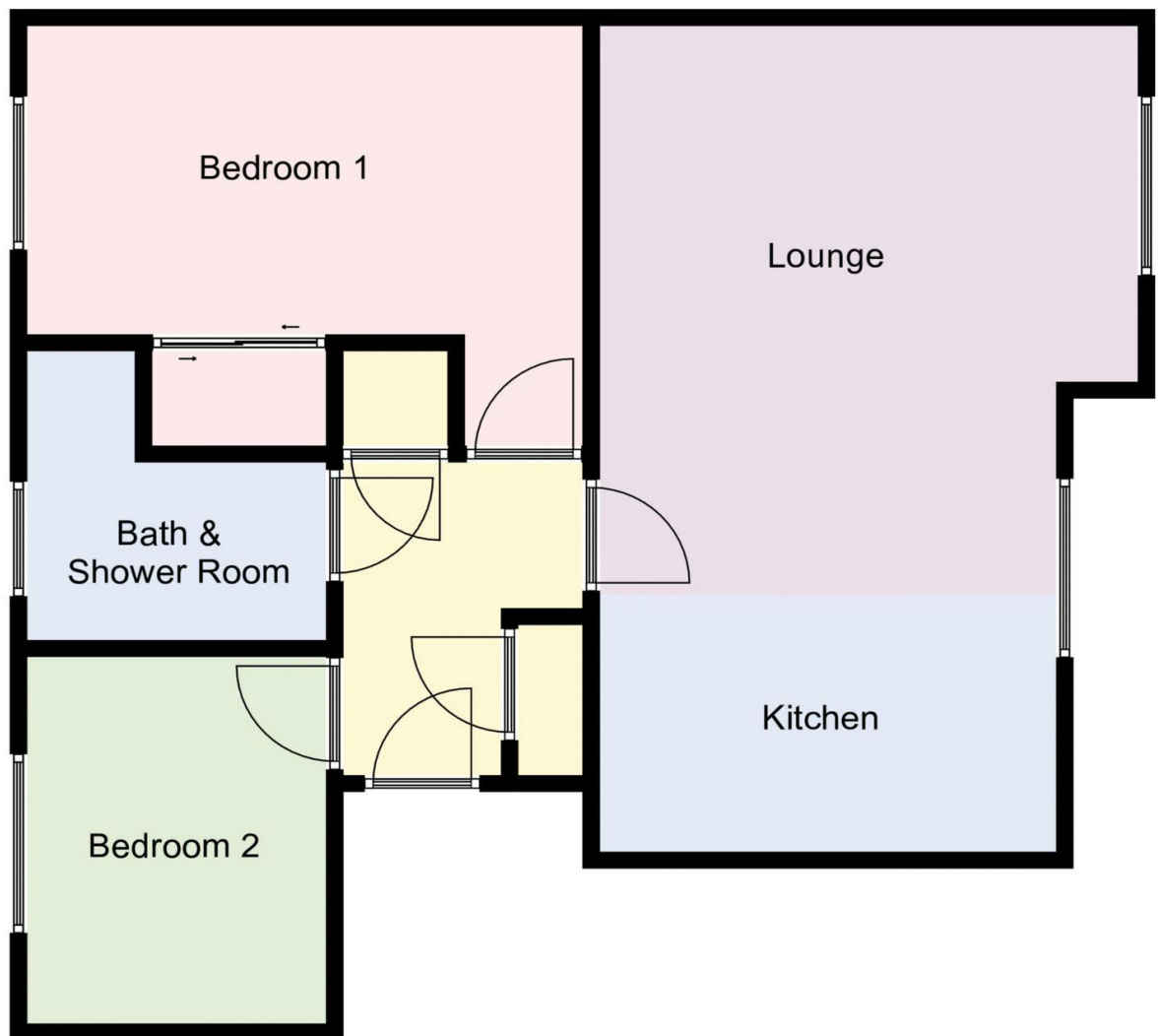
- Situated in Knowle Village
- Two Double Bedroom Second Floor Apartment
- Entrance Hall
- Open-Plan Lounge/Kitchen
- Bath & Shower Room
- Communal Garden
- Parking
- NO ONWARD CHAIN!
- Energy Efficiency Rating: D/67

Score	Energy rating	Current	Potential
92+	A		
81-91	B		
69-80	C		76 C
55-68	D	67 D	
39-54	E		
21-38	F		
1-20	G		

Property Reference : F2164

Council Tax Band: C

Floor Plans (For illustrative purposes and not drawn exactly to scale)



The Accommodation Comprises:-

Front door with telephone entry system into communal hallway leading to door into:-

Entrance hall:-

Flat ceiling with smoke detector and spotlighting inset, electric heater, cupboard with fuse box and meters, further cupboard housing hot water cylinder tank, door to:-

Lounge Area:-

23' 10" x 15' 1" (7.26m x 4.59m) Maximum Measurements

Two windows to side elevation, flat ceiling with lighting inset, electric heater.



Kitchen Area:-

Range of base and eye level units with roll top work surfaces, integrated oven and hob with concealed extractor over, one and a half bowl stainless steel sink unit with mixer tap, space for washing machine and fridge/freezer.



Bedroom 1:-

13' 2" x 12' 1" (4.01m x 3.68m)

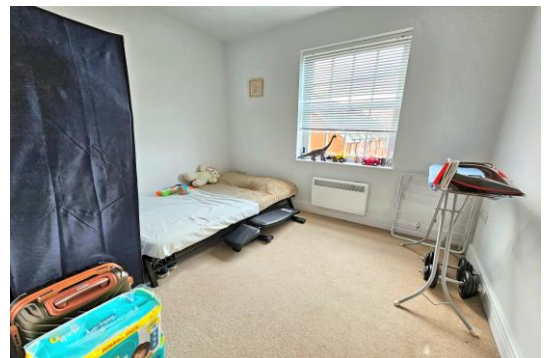
Window to side elevation, electric heater, sliding mirror-fronted doors to wardrobe unit with shelving and rail.



Bedroom 2:-

10' 7" x 9' 3" (3.22m x 2.82m)

Window to side, electric heater



Bath & Shower Room:-

9' 6" x 8' 4" (2.89m x 2.54m)

Window to side, close-coupled wc, wash hand basin with mixer tap, mirror-fronted cupboard over with shaver socket inset, tiled bath with hand shower attachment, shower cubicle with sliding door and electric shower, tiled to dado rail height with complimentary floor tiling.



Agents Notes:-

Allocated parking. This property is Leasehold.

Disclaimer: These particulars are set out as a general outline in accordance with the Consumer Protection from Unfair Trading Regulations 2008 (CPR's) and Business Protection from Misleading Marketing Regulations 2008 (BPR's) only for the guidance of intending purchasers or lessees, and do not constitute any part of an offer or contract. Details are given without any responsibility, and any intending purchasers, lessees or third parties should not rely on them as statements or representations of fact, but must satisfy themselves by inspection or otherwise as to the correctness of each of them.

We have not carried out a structural survey and the services, appliances and specific fittings have not been tested. All photographs, measurements, floor plans and distances referred to are given as a guide only and should not be relied upon for the purchase of carpets or any other fixtures or fittings. Gardens, roof terraces, balconies and communal gardens as well as tenure and lease details cannot have their accuracy guaranteed for intending purchasers. Lease details, service ground rent (where applicable) are given as a guide only and should be checked and confirmed by your solicitor prior to exchange of contracts.

No person in the employment of Fenwicks Estates Ltd has any authority to make any representation or warranty whatever in relation to this property. Purchase prices, rents or other prices quoted are correct at the date of publication and, unless otherwise stated, exclusive of VAT.

Data Protection: We retain the copyright in all advertising material used to market this Property.

Money Laundering Regulations 2017: Intending purchasers will be required to produce identification documentation once an offer is accepted